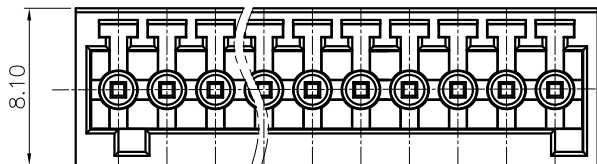
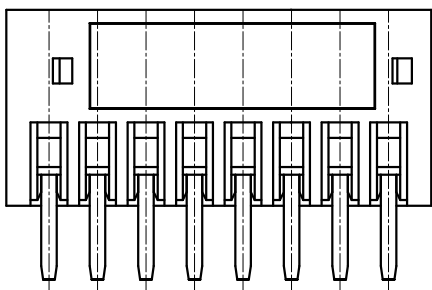


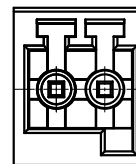
REVISION RECORD

REV	ECN	DESCRIPTION	DRFT	DATE

8P and 8P following no reinforcement.



02P



NOTES1:

UL Standard

1. Rated voltage/current : 150V / 4A
2. Withstanding voltage : AC1300V/1Min.

IEC Standard

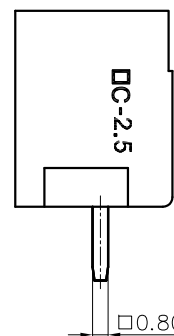
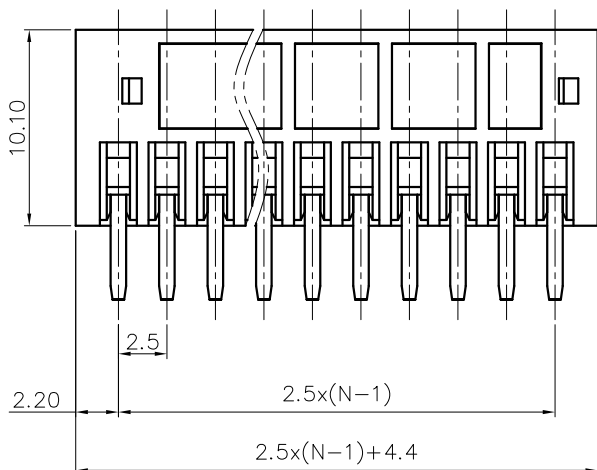
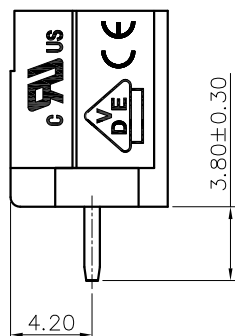
1. Pollution degree	2
Overvoltage category	II
Rate impulse voltage(KV)	2.5KV
Rate voltage(V)	250V
Rate current(A)	5A

NOTES2:

1. Dimension shall be interpreted per ASME Y14.5-2009
2. Pitch : 2.5mm, Poles : N=02~12P
3. Operating temperature: -40°C~+105°C
4. Undimensioned tolerances:

Pitch range in mm	Nominal dimension range in mm				0.1/10		
	Over 6 TO 10	Over 10 TO 24	Over 30 TO 60	Over 60 TO 150			
±0.15	±0.20	±0.30	±0.50	±0.70	±1.00	±1.30	±2*

5. RoHS Compliance

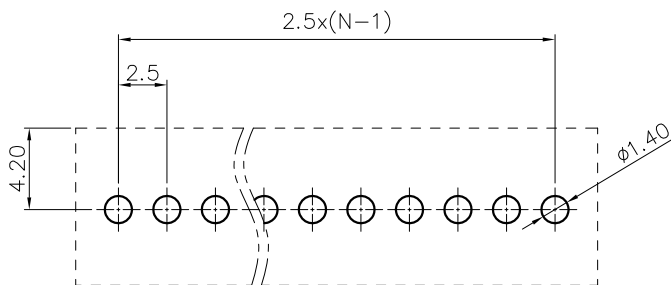


VC - 2.5 - XXP - 1Y - 00A (H)

(Series No.) (Pitch) (Poles) (Color): 1.(Grey) 2.(Blue) 3.(Black) 4.(Green) 5.(Orange) 6.(Red) 7.(Transparent) 8.(Yellow) 9.(White)

(RoHS) 00A--(Standard)

(Single Pitch)



PCB LAYOUT

DETACHED LISTS	PART NO.:	/		
	APPD:	/	NAME:	VC-2.5-XXP-1Y-00A(H)
	CHKD:	/	TITLE:	CUSTOMER DRAWING
	DRFT:	/	REV	DO
DRAWING NO.:		/	SHEET	1/1
THIRD ANGLE PROJECTION		MM (INCH)	DO NOT SCALE DRAWING	SCALE 1:1